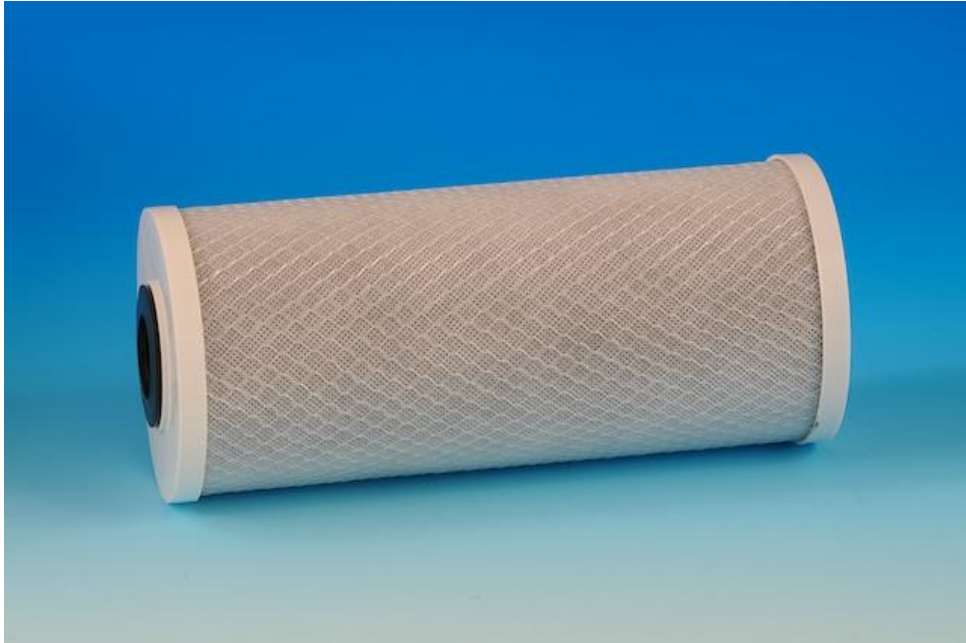


# **Datasheet**

## **Max C carbon block water filter cartridge**



### **Technical Specifications:**

**10" height x 4" in diameter**  
**30 deg C maximum temperature**  
**70 litres per minute flow rate**  
**Carbon block to reduce chlorine**  
**and bad taste**

## Features & Benefits:

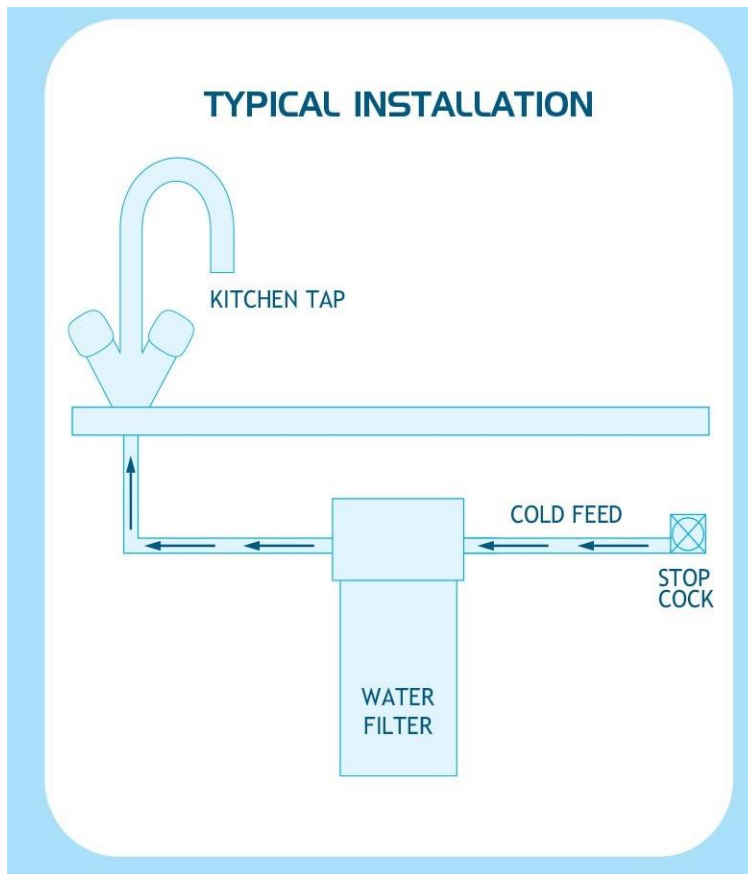
### Benefits...

- Complete kit ready for installation
- Cartridges to remove most contaminants
- Easily installed
- 6 month cartridge reminder system
- Lifetime guarantee on housing

### Replacement filter cartridges

Our customer service includes a registration and reminder service whereby we will contact you every 6 months after the purchase of your water filter and also advise you on where you can purchase your replacement cartridge. Because contaminants are trapped within the filter cartridge, you need to change them on a regular basis to maintain a clean water supply. The lifespan of a cartridge is dependant on the quality of water passing through it. We recommend changing filter cartridges every 4-6 months.

## Installation line drawings



## General

# Cartridge replacement (recommended every 4-6 months)

---

1. Turn off water supply and drain the tap by leaving tap open.
2. Using spanner provided unscrew the housing from the head and take out old cartridge. (Place bowl under housing to catch any remaining water in housing).
3. Fit new cartridge and screw bowl back on to head & tighten.
4. Turn water supply back on, open tap to remove any air locks.
5. Check for leaks.